

mipim[®]

Programme 2025

Conferences & Events

11 - 14 March 2025

Housing matters! On Monday 10

Palais des Festivals, Cannes

Global Conference Programme Sponsors



Sponsors & Partners

GLOBAL CONFERENCE PROGRAMME SPONSORS



RE-INVEST SPONSORS



MIPIM OPENING SPONSOR

NEWMARK

VIP LOUNGE SPONSOR



HOUSING MATTERS SPONSOR



UK HUB PARTNERS



HTL CONNECTION SPONSORS & PARTNERS



WORKSHOPS CONTENT PARTNERS



FORUM DES ÉLUS PARTNERS



ROAD TO ZERO



CONFERENCES SPONSORS & PARTNERS



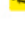


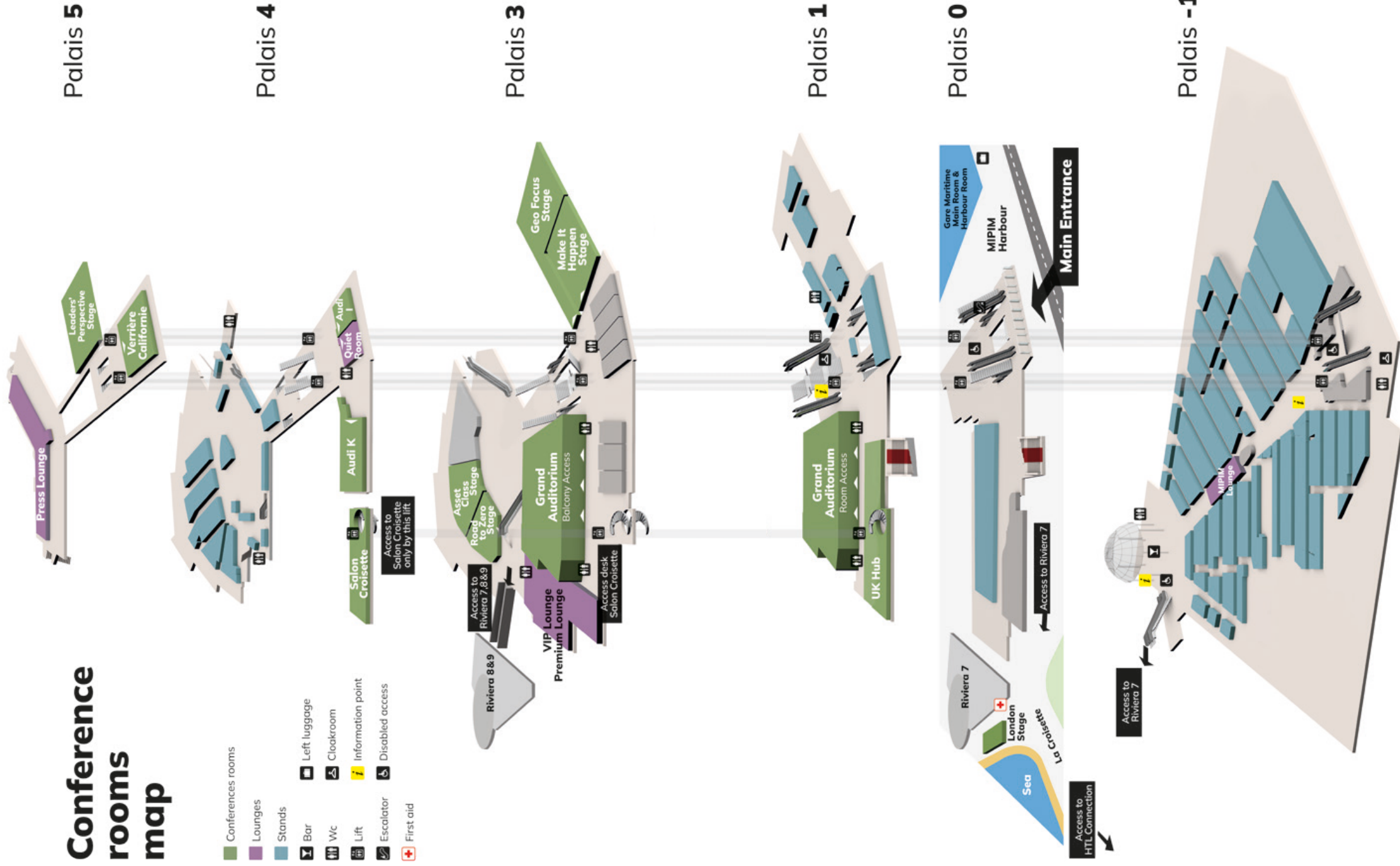
DIVERSITY & INCLUSION PARTNERS



Conference Rooms Map

Conference rooms map

- Conferences rooms
- Lounges
- Stands
-  Bar
-  Wc
-  Lift
-  Escalator
-  First aid
-  Left luggage
-  Cloakroom
-  Information point
-  Disabled access



Leaders' perspective stage

Debate big picture topics and investment trends, including how to be a change maker, demographic change, and the latest macroeconomics, finance challenges and rising insurance costs.

Road to Zero stage

Dive into the deep end and find out firsthand about the many innovative initiatives the real estate community is taking on the road to net zero. Walk away feeling inspired to do even more.

Asset Class stage

Hear all you need to know via six comprehensive workshops on residential, logistics, offices, healthcare, data centres and life sciences. Network, learn and debate with your peers in these not to-be-missed sessions

Make it happen stage

In 2025 the Make it happen stage will focus on attracting talent on Tuesday, how to make the best of Artificial Intelligence on Wednesday and successful public private partnerships on Thursday. *Thursday Make it happen to be hosted in our new conference venue in Gare Maritime.*

UK Hub

Explore the latest trends, opportunities and challenges in this dedicated stage for the UK.

HTL Connection

New location, new conference cycle.

Our conference cycle has been designed to address the fundamental topics of the 2025 hospitality industry and beyond. Hospitality developers, operators, and investors will discuss Investment climate, multi-destination assets and hybridization, leases and contractualization, leisure offerings, and the shift in destinations.

Geo Focus stage

Join special dedicated focuses on the key MIPIM markets of France, Germany, the Nordics, Gulf, Africa, Asia, and Central and Eastern Europe.

Discover our new conference venue with a view in 2025!

The Gare Maritime (registration venue in 2024), will now host MIPIM outstanding events such as the Forum des Élus and Equality of opportunities in real estate on Wednesday, the Public Private Partnerships on Thursday, and much more!

Speakers



Dr. Mario Draghi

**Former President of the Council of Ministers of Italy
& President of the European Central Bank (ECB)**

Opening Keynote – Tuesday 11 March – 15.00 -16.00 – Grand Auditorium Stage

Mario Draghi served as President of the Council of Ministers of Italy from February 2021 to October 2022. His tenure as Prime Minister was defined by many memorable achievements, most notably including the fight to end the Covid-19 pandemic, his leadership of the Next Generation EU initiative, and his solidarity with the Ukrainian people during the ongoing war with Russia.

Described by Paul Krugman as “[arguably] the greatest central banker of modern times,” Dr. Draghi was President of the European Central Bank (ECB) from November 2011 to November 2019 and is widely credited with saving the Eurozone. Over his eight-year term, the monetary policy of the ECB led the Eurozone into an expansion with the creation of 13 million jobs, and the European stock market rising by two-thirds.

Mario Draghi has been at the center of the most globally impactful economic events of the last four decades, including the 2012 Eurozone crisis, the 2015 Greek Debt Crisis, and Brexit. Prior to 2011, Dr. Draghi served as Governor of the Banca d'Italia and Chairman of the Financial Stability Forum (later the Financial Stability Board) that crafted for the governments of the G-7 countries the first regulatory response to the global financial crisis. Drawing on these extraordinary experiences, Dr. Draghi is among the most well-equipped experts to provide analysis on the future direction of the global economy.

Dr. Draghi was listed as the 8th most powerful person in the world by Forbes in 2014 and the world's second greatest leader by Fortune in 2015. He received his PhD in Economics from the Massachusetts Institute of Technology.

Dr. Draghi is globally known for his bold and spirited speeches. He simplifies the world financial outlook, giving audiences the keys to understanding what is needed to control risks and translates uncertainty into tangible takeaways for audiences worldwide.

Ministers



KHALFAN AL SHUEILI
Minister of Housing and
Urban Planning
OMAN



**SOPHIE HÆSTORP
ANDERSEN**
Minister for Social Affairs
and Housing
DENMARK



VALÉRIE LÉTARD
Housing Minister
FRANCE



CELSE SABINO
Minister of Tourism
MINISTRY OF TOURISM
OF BRAZIL

Speakers

UN-Habitat



ANACLAUDIA ROSSBACH
UN Under-Secretary-General
and Executive Director
UN-HABITAT

Mayors of European Capitals



VALDAS BENKUSKAS
Mayor
VILNIUS CITY
MUNICIPAL COUNCIL



HARIS DOUKAS
Mayor
CITY OF ATHENS



ROBERTO GUALTIERI
Mayor of Rome
CITY OF ROME



SADIQ KHAN
Mayor
LONDON



JOSE LUIS MARTINEZ ALMEIDA
Mayor
MADRID



EINAR THORSTEINSSON
Mayor
REYKJAVIK



LARS WEISS
Lord Mayor
COPENHAGUE



ANDREA AGRUSOW
Managing Director / COO
GARBE INDUSTRIAL
REAL ESTATE GMBH



KHALED ABBAS
Chairman &
Managing Director
ADMINISTRATIVE CAPITAL FOR
URBAN DEVELOPMENT (ACUD)



HAKAN AGCA
Founder &
Managing Director
CROSS WORKS



NICOLAS ALCHAL
EVP, KONE Europe
KONE CORPORATION



MARK ALLAN
CEO
LANDSEC



PAMELA AMBLER
Head of Investor Intelligence
& Strategy Capital Markets,
Asia Pacific
JONES LANG LASALLE PROPERTY
CONSULTANTS PTE LTD



JENNIFER ANDERSSON
Managing Partner
NIAM AB



ANDREW ANGELI
Global Head of Real Estate
Research & Strategy
ZURICH INSURANCE



**ANGELOS ANGELI-
DAKIS**
CEO
MIRUM HELLAS S.A.



SARA ANZINGER
Senior Vice President,
Strategy and ESGx
MEASURABL



BENJAMIN AUBRY
CEO
IUDO



GWENAELLE AVICÉ HUËT
Executive Vice President
Europe Operations
SCHNEIDER ELECTRIC



ASHOK BALABHASKARANE
REAL ESTATE DIRECTOR
WOJO



**COSTANZA BALBONI
CESTELLI**
Head of Data & Innovation
GENERALI REAL ESTATE



DIDIER BALCAEN
CEO & Co-founder
SPEEDWELL
DEVELOPMENT



BEN BANNATYNE
President of Prologis Europe
PROLOGIS



MAX BARCLAY
CEO
NEWSEC SWEDEN



YOLANDE BARNES
Professor of Real Estate,
Consultant & NED
UCL



HONOR BARRATT
CEO
BIRCHGROVE



DANILO BATISTA
CEO - Founding Partner
D&P ARQUITETURA



ROGER BAUMANN
COO Global Real Estate
ZURICH INSURANCE
COMPANY LTD.



KELLIE BEIRNE
Chief Executive
CARDIFF CAPITAL REGION



EMANUELE BENA
Managing Partner
VELO CAPITAL



KWASI BENNEH
Managing Director, Head of
North America Commercial
Real Estate Lending
MORGAN STANLEY

Speakers



STEPHANE BENSIMON
CEO
WOJO



STÉPHANIE BENSIMON
Member of the Executive Committee,
Member of the Board of Ardian France
& Head of Real Estate
ARDIAN FRANCE



MAGNUS BERGLUND
Head of CapMan
Real Estate Norway
and Sweden
CAPMAN



KATHARINA BEUMELBURG
Chief Sustainability &
New Technologies Officer
HEIDELBERG MATERIALS AG



MARCELO CARDINALE BRANCO
Secretary of State of Urban
Development and Housing
DEPARTMENT OF STATE OF
URBAN DEVELOPMENT AND
HOUSING



KIMBERLY CAREY
Director
TRS



ANDREA CARPENTER
Director
DIVERSITY TALKS
REAL ESTATE



GUILAUME CAUVIN
VP ESG Consulting
DEEPI



MICHAL BEZDEKA
Senior Lead Logistics
Real Estate
ZALANDO SE



LEM BINGLEY
Editor
PROPERTY WEEK



MATTHEW BLACK
Climate Action Manager
WORLD GREEN BUILDING
COUNCIL



FELICITY BLACK-ROBERTS
SVP Development
HYATT



CATHERINE CHAN
Chief Development Officer
HOTEL101 GLOBAL



HELENE CHARTIER
Director of Urban Planning
and Design
C40 CITIES



SOPHIE CHICK
ESG Programmes,
Vice President
ULI EUROPE



SIMON CHINN
Vice President Research
& Advisory Services
URBAN LAND INSTITUTE



TOM BLOXHAM MBE
Chair
URBAN SPLASH



ÀLEX BOADA
Head of Global QIastat
Operations &
Barcelona site Head
QIAGEN



JASON BORDAINICK
Co-Founder, CEO
HUDSON VALLEY
PROPERTY GROUP, LLC



DAVID BOUTON
Managing Director,
Co-Head North America
CMBS & Real Estate Finance
CITI



IWONA CHOJNOWSKA
Business Location
Consulting Director
JLL



CIPRIAN CIUCU
Mayor of District 6,
Bucharest
MUNICIPALITY
OF BUCHAREST



RT HON GREG CLARK
Executive Chair of Warwick
Innovation District
UNIVERSITY OF WARWICK



CHANTAL CLAVIER
Partner,
Head of Real Estate
HEIDRICK & STRUGGLES



RICHARD BOYD
Senior Programme
Manager
LAUDES FOUNDATION



ANNE BREEN
Global Head of Real Estate
abrdn INVESTMENTS



CLEMENS BRENNINKMEIJER
Head of Sustainability
REDEVCO B.V.



PATRICK BRINKER
Head of Real Estate Investment
Management
HAUCK AUFHÄUSER LAMPE
PRIVATBANK



ELISE COLLA
Head of Sales and
Partnerships
KADANS SCIENCE
PARTNER



HELEN COLLINS
Principal &
Managing Director
AVISON YOUNG



ANNA COOBAN
Business and
Economics Reporter
CNN



TOM COPLEY
Deputy Mayor,
Housing and Residential
Development
GREATER LONDON
AUTHORITY



ED BRITTON
Director
DELOITTE LLP



FARRAH BROWN
Head of Debt Capital
Markets, EU & APAC
NUVEEN REAL ESTATE



ALEX BURGUYNE
Global Head of Data
Centre Valuation
KNIGHT FRANK



TIM BURKE
Editor
ESTATES GAZETTE



FABRICE COQUIO
Senior Vice-President Digital Realty,
President Digital Realty in France
DIGITAL REALTY



PETER COSMETATOS
CEO
CREFC EUROPE



KRUNO CREPULJA
Chairman of the
Management Board / CEO
INSTONE REAL ESTATE
GROUP SE



CSONGOR CSUKAS
Global Head of Property
Management at BNP Paribas
Real Estate
BNP PARIBAS REAL ESTATE



ADAM BURSTOW
Business Development
Executive
AMAZON WEB SERVICES



ALASTAIR BUTCHER
Regional Development
Director
BARRATT LONDON



IKER CANO
CEO & Co-Founder
COSYMBIO LABS



JOHANNA CAPOANI
Head Portfolio Manager
Hospitality
SWISS LIFE ASSET
MANAGERS FRANCE



RAMÓN CUBIÁN
Director of Land
MADRID REGIONAL
GOVERNMENT



LEONEL CUNHA E SILVA
Director
GRUPO CASAIS



PEGGY DA SILVA
CEO
PIMCO PRIME REAL ESTATE



TONE TELLEVIK DAHL
CEO
NORWEGIAN PROPERTY
FEDERATION

Speakers



STEFAN DAHLBO
CEO
FABEGE



DAVID DAMIBA
Managing Partner, Co-CEO
KASADA CAPITAL
MANAGEMENT



CÉCILE DAP
LCBI Director
BBCA



ADINA DAVID
Founder
POEM CAPITAL



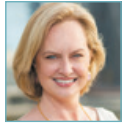
DANIEL FERNANDES
CEO - Founding Partner
FERNANDES ARQUITETOS
ASSOCIADOS



KATHERINE FIELDGATE
Investment Director
IMPERIAL COLLEGE
LONDON



MACIEJ FIJAŁKOWSKI
Secretary of the City
of Warsaw
CITY OF WARSAW



COURTNEY FINGAR
Founder
FINGAR DIRECT
INVESTMENT



JO DAVIS
Principal, Managing
Director Place,
UK Executive Chair
AIVSON YOUNG



SANDRA DAZA
General Director
GESVALT



ANNELOU DE GROOT
CEO
CUSHMAN & WAKEFIELD
THE NETHERLANDS



LAURENCE DESMAZIÈRES
Managing Partner
ICAWOOD



MEL FLAHERTY
Deputy Editor
PROPERTY WEEK



LUDOVIC FLANDIN
DIRECTEUR CONSEIL RSE
R3



CLAIRE FLURIN BELLEC
Consultant & author,
expert in urban
revitalization
CURIOSITY



DAVID FORTI
Co-Chair & Partner
DECHERT LLP



DIANA DZIAIN
Director
AFLOG



BRAD DOCKSER
CEO, Co-founder
GREENGEN



SOPHIE DONABEDIAN
Chief Sustainability Officer
B&B HOTELS



JULIEN DROUAUD
Head of Residential
Department
COVIVIO



DOMINIC FRITZ
Mayor of Timisoara
CITY HALL OF
TIMISOARA CITY



EMILY GABB
Head of Strategic
Partnerships
NLA



CHRISTIAN GAEBLER
Berlin Senator for
Urban Development,
Building and Housing



FRANCESCA GALEAZZI
Partner, Real Estate,
ESG & Sustainability
KPMG



ALEKSANDRA DULKIEWICZ
Mayor of Gdańsk
CITY OF GDAŃSK



FREDERIC DUROUSSEAU
Chief Real Estate and
Development Officer
CLARIANE



FAISAL DURRANI
Partner - Head of
Research, MENA
KNIGHT FRANK



AMBER DYCE
CEO
FOUNDATIONS FOR
SOCIAL CHANGE



HENRY GALLEGO
CEO
KTESIUS SOCIMI
AND RKS-AM



VERONICA GALLO ALVAREZ
Head Of
Investment Management
REDEVCO



NUNO GALVAO PINTO
RVP Development
HYATT



TIM GAMES
Executive Director
- Investment and Delivery
LIVERPOOL CITY REGION
COMBINED AUTHORITY



KASIA DZIEWULSKA
Executive Director, Co-Head
Global Data & Forecasting
CBRE



MILLIE EARL
Leader
BCP COUNCIL
(BOURNEMOUTH,
CHRISTCHURCH & POOLE)



HALA EL AKL
VP, Sustainable Investing
& Operations
OXFORD PROPERTIES



HANANE EL HAYEK
Chair of the advisory
board
SMARTER FINANCE 4 EU



CRISTINA GARCIA-PERI
Senior Partner
AZORA



HUGH GARNETT
Senior Specialist Real Assets
INSTITUTIONAL INVESTORS
GROUP ON CLIMATE CHANGE



HELENE GAUTHIER
CEO
HONOTEL



ALYCE GE
Investor
CAMBER CREEK



ROBBIE EPSOM
EMEA Head of Sustainability
CBRE INVESTMENT
MANAGEMENT



KATHERINE FAIRCLOUGH
CEX
LIVERPOOL CITY REGION
COMBINED AUTHORITY



Pr. JANE FALKINGHAM
Vice President - Engagement
& International
UNIVERSITY OF SOUTHAMPTON



SERGE FAUTRÉ
Chief Executive Officer
AG REAL ESTATE



YALDA GERAMI
Vice President,
Built Environment Industry
SALESFORCE



BRIGIT GERRITSE
General Director
DUTCH GREEN BUILDING
COUNCIL



PAUL GIBSON
Chief Investment Office
EMEA Direct Strategies
CBRE INVESTMENT
MANAGEMENT



STEFAN GIELENS
CEO
Aedifica

Speakers



LOURENÇO GIMENES
Director - Founding Partner
FGMF



CATHERINE GUIZOL
Global Workplace Director
IPSEN



SUZY GLASS
Co-CEO
BRAE



JORDAN GOLDSTEIN
Co-CEO
GENSLER



MARIKA HILLDOFF
ESG Manager Alternative
Investment
AP7



VICTORIA HILLS
Chief Executive
ROYAL TOWN PLANNING
INSTITUTE



ANTHONY HOBLEY
Deputy Chair
HOWDEN



MAAIKE HOF
Co-CEO
GREEN



BARRY GOSIN
Chief Executive Officer
NEWMARK



EVELINA GRECENKO
Senior reported
ESTATES GAZETTE



DAN GREENSLADE
Chief Financial Officer
GET LIVING PLC



MATT GRIFFITHS-RIMMER
Communications and
Impact Director
HADLEY PROPERTY GROUP



VIKTORIA HOFFMANN
Associate Director Fund
- and Portfoliomanagement
European Living
SWISS LIFE ASSET MANAGERS



JAMES HOOTON
Managing Director
GREEN FINANCE INSTITUTE



ANDREAS HORN
Head of AI Ops
IBM



KATARINA HORVATHOVA
Vice President
Transactions CEE
MANOVA PARTNERS



MAGGIE GROGAN
Managing Director
MUSE



CAROLINE GRONACK
Managing Director
APLEONA INVEST GMBH



GUY GUEIRARD
Global Logistics Growth
Lead
JLL



GRIGOR HADJEV
Head of Development
Europe & Global Innovation
PIMCO PRIME REAL
ESTATE



TERO HOTTINEN
VP, Head of Strategic
Partnerships
KONE CORPORATION



FRANK HOVORKA
RICS Chair, Sustainability
RICS



BILL HUGHES
Global Head of Real Assets and
Co Head of Private Markets
LEGAL & GENERAL
INVESTMENT MANAGEMENT



DAN HUGHES
Director
ALPHA PROPERTY
INSIGHT



JULIAN HAGENSCHULTE
Head of Digital Real
Estate, Construction and
Smart Infrastructure
PWC



ROSE-ANNA HALLAM
Ambassador
REGENERATION BRAINERY



GHISLAINE HALPENNY
Director of ESG &
Corporate Affairs
REGAL



JENNY HAMMARLUND
Senior Managing Director
ONTARIO TEACHERS'
PENSION PLAN



ROLAND HUNZIKER
Director Built Environment
WBCSD
(WORLD BUSINESS
COUNCIL FOR SUSTAINABLE
DEVELOPMENT)



DAN INNES
Founder + MD
INNESCO



ARTHUR JAEGER
Chief Development &
Real Estate Officer
ADAGIO APARHOTEL



DOMINIQUE JAKOB
Co-founder
JAKOB+MACFARLANE



LIZ HAMSON
Editor and founder
BE NEWS



MATHEU HANOTIN
President, Mayor
PLAINE COMMUNE,
SAINT-DENIS



JESSICA HARDMAN
CEO & Co-Founder
ABORIA CAPITAL



FLORA HARLEY
Head of ESG Research
KNIGHT FRANK LLP



CHRISTIAN JANSSEN
Head of Debt - Europe
NUVEEN REAL ESTATE



EMILIE JASKULA
Global Head of Offices
AXA IM ALTS



LAURA JENKINSON
Principal
AVISON YOUNG



ANNALISE JOHNS
Associate Director
UNIVERSITY OF WESTMINSTER



KIRSTY HARROWER
Partner
NORTON ROSE
FULBRIGHT LLP



CHRISTOPHER HAYWARD
Policy Chairman
CITY OF LONDON
CORPORATION



TARA HEUZÉ-SARMINI
Cofounder & CEO
COMMUNE



CARRIE HIEBELER
Founder, Managing Partner
GREENE PARK CAPITAL



SHRAVAN JOSHI
Managing and Transportation
Chairman
CITY OF LONDON CORPORATION



SOMAYA JOSHUA
Managing Executive
ABSA CORPORATE AND
INVESTMENT BANK:
COMMERCIAL PROPERTY



PHILIPPE JOURNO
President
COMPAGNIE DE PHALSBOURG



RONEN JOURNO
Head of European
Management Services
HINES EUROPE LTD

Speakers



RASMUS JUUL-NYHOLM
Founder
HOME.EARTH



AKINORI KANAYAMA
Executive Officer
TOKYU CORPORATION



VICTOR KARLSSON
Country Manager Sweden,
Bonnier News Business
Real Estate Brands
FASTIGHETSNYTT/BUSINESS
ARENA



SAMANTHA KEMPE
Co-founder,
Chief Investment Officer
IMMO



PEDRO LIRA
Director - Founding Partner
NATUREZA URBANA



DOUGLAS LOEWE
CEO
KAO DATA



FABRICE LOMBARDO
Head Real Estate
SWISS LIFE ASSET
MANAGERS FRANCE



ELIN MACK LØVDAL
Partner
LAW FIRM HAAVIND



GUILA CLARA KESSOUS
Unesco Ambassador
UNESCO



SHOBI KHAN
CEO
CANARY WHARF GROUP



KAREN KILGOUR
Leader
NEWCASTLE CITY
COUNCIL



SASCHA KLAUS
CEO
BERLIN HYP AG



NICHOLAS MACLEAN
RICS President-Elect
RICS



CINDY MACMILLAN
Vice President,
Asset Management
GROSVENOR
- PROPERTY AMERICAS



VALÉRIE MARÉCHAL
Head Portfolio Manager
Resi & Care
SWISS LIFE ASSET
MANAGERS FRANCE



GEO MARGESCU
CEO & Co-Founder
FORTE PARTNERS



DIETER KNITTEL
Managing Director,
Head of CEE
PBB DEUTSCHE
PFANDBRIEFBANK



MANUEL KOEPEL
Managing Director
BF.CAPITAL GMBH



NATALIA KOLOTNEVA
Head of Living and Hospitality
- Asset Management
LASALLE



DEE KORAB
Founder and Managing Director
SPARKD



SIMON MARKS
City Executive, Birmingham
ARCADIS



JÉRÔME MARTIN
Avocat au Barreau de Paris
MARTIN & ASSOCIÉS



JONATHAN MARTIN
Director of Inward Investment
and Strategic Partnerships
WALTHAM FOREST COUNCIL



DAVID MARTÍNEZ
CEO
AEDAS HOMES



ANNA KULIK
CEO
ANNA KULIK LTD



SILVIA LABÉ
Director of Marketing,
Communications and
Competitive Intelligence
BIOCAT



ERIC LANG
Senior Managing Director
TEACHER RETIREMENT
SYSTEM OF TEXAS



MICHAEL LASCHER
Senior Managing Director
and Global Head of Real
Estate Debt Capital
Markets
BLACKSTONE



SELINA MASON
Director of Masterplanning
LENLEASE



KANJI MATSUSHITA
Executive Officer and
General Manager
TAKENAKA CORPORATION



VALENTINA MAURO
Managing Director
EVORA GLOBAL



PHIL MAYALL
Managing Director
MUSE PLACES



SONIA LAVADINHO
Founder & CEO
BFLUID PROSPECTIVE
RESEARCH



JASON LEE
Head of Asia / Chief
Investment Officer
AEW



MELANIE LEECH
Chief Executive
BRITISH PROPERTY
FEDERATION



VILLE LEHMUSKOSKI
Executive Director
CITY OF HELSINKI



ANTON MCGARVEY
Director
COLLIERS INTERNATIONAL
PROPERTY CONSULTANTS



LARS MEISINGER
CEO and Chairman of
the Executive Board
PERISKOP



PATRICK MENDES
CEO Europe & North Africa
- Premium, Midscale &
Economy
ACCOR



SAMI MENDIL
Global Head of Real Estate
B&B HOTELS GROUP



JOONAS LEMSTRÖM
Head of Nrep Finland
NREP OY



GARETH LEWIS
Director
PWC



ALEXANDRA LIBES
Deputy CEO - Development
& Strategic Projects
BWH HOTELS GROUP



ANNE LILLYWHITE
Senior Vice President
and General Manager,
Energy Solutions
EATON



TAREK MERLIN
Director & co-founder
FEIX&MERLIN ARCHITECTS



CRAIG MEYERS
President USA
JLL



HUBERT MICHALAK
Managing Director for
Central and Eastern Europe
HILLWOOD



ROBERT MIKLO
Director
COLLIERS

Speakers



TUGDUAL MILLET
CEO Hotels
COVIVIO



MARINA MILOSEV
Co-founding Partner
BEYOND THE RED LINE



ITSUHIRO MIURA
Deputy Director-General,
City, Housing
MINISTRY OF LAND,
INFRASTRUCTURE,
TRANSPORT AND TOURISM



MICHEL MISEREZ
CFO - EMEA
MARRIOTT INTERNATIONAL



YUICHI OKA
Executive Liaison Officer
DAIWA HOUSE INDUSTRY
CO., LTD.



MUYIWA OKI
President
RIBA



HELENA OLIN
Head of Real Assets
AP2



SOREN RODIAN OLSEN
Managing Director, Logicensers
NREP



**FRANCES
MOFFETT-KOUADIO**
Strategic Investment Director
THAMES ESTUARY
GROWTH BOARD



IBRAHIM MOHAMED
Advisor
DEPARTMENT OF BUSINESS
AND TRADE UK



MAHDI MOKRANE
Co-Head of Fund Management
PATRIZIA PROPERTY
INVESTMENT MANAGERS LLP



TIM MOONEN
Co-Founder and MD
THE BUSINESS OF CITIES



BELIT ONAY
Mayor
CITY OF HANNOVER



BRETT ORMROD
Net Zero Carbon Lead, Europe
LASALLE INVESTMENT
MANAGEMENT



RENATA OSIECKA
Managing Partner
AXI IMMO GROUP SP.
Z O.O.



MAARTEN OTTE
Head of Investor Relations
CTP



LAURENT MORALI
Chief Executive Officer
KUSHNER COMPANIES



JOHN MULQUEEN
Chief Investment Officer
CANARY WHARF
GROUP PLC



NAEL MUSTAFA
CEO
GFH PARTNERS LTD.



SERGIO MYSSIOR
CEO - Founding Partner
MYR GROUP



TINA PAILLET
CEO & Co-Founder
CIRCOTRADE



DIRK PAHLKE
Non-executive - independent
member of the
Board of Directors
ONE UNITED PROPERTIES



JOSH PANKNIN
Director of Real Estate AI
Research & Innovation
Columbia University



KATERINA PAPAVALSILEIOU
ESG and Responsibility
Director
FEDERATED HERMES



JO NEGRINI
Global Leader for Inclusive
Cities, Director
ARUP



**HERMAN FØLLING
NESS**
Senior Manager / Partner
MALLING & CO



GUY NICHOLSON
Non Executive Director / Deputy Mayor
& Cabinet Member
LONDON BOROUGH OF HACKNEY
/ LONDON LEGACY DEVELOPMENT
CORPORATION / HARLOW & GILSTON
GARDEN TOWN



STEVE NITSCHKE
Managing Director - Head
of European Acquisitions
MEDICAL PROPERTIES
TRUST



DAVID PARTRIDGE
Chairman
UK NET ZERO CARBON
BUILDINGS STANDARD



FRANÇOIS PERRIGAULT
Directeur conseil
EVIDENCE



XAVIER PERRIN
Global Head of Real Estate
L'ORÉAL GROUP



ROB PERRINS
Chief Executive
BERKELEY GROUP



ALEKSANDRA NJAGULJ
Global Head of
Sustainability, Real Estate
DWS



ALEXANDRA NOTAY
Chair
RADIX BIG TENT
HOUSING COMMISSION



DR JULIE NUGENT
Chief Executive
COVENTRY CITY COUNCIL



AMANDA NURSE
Co-Founder
CARTERWOOD



MATHILDEQ PETRIAT
Chief Customer Success Officer
GRESB



JESSICA PILZ
Head of Sustainable Investing,
Private Markets
FIERA REAL ESTATE



JULES PIPE
Deputy Mayor for Planning,
Regeneration and the Fire Service
GREATER LONDON AUTHORITY



ROGER PLA
Partner
ROCAJUNYENT



Dr. ALEXANDER NUYKEN
EMEA Head of
Life Science Markets
JONES LANG LASALLE SE



JOHN O'DRISCOLL
Global Co-Head Real
Estate
AXA IM ALTS



MABEL OGUNDAYO
Head of Engagement, Social
Value and Public Partnerships
HADLEY PROPERTY GROUP



MERT OGUT
Project Manager,
Built Environment, ITP
WBCSD



NICOLE POETSCH
Head of North & Central Europe;
Co-Head of Investment Europe
PIMCO PRIME REAL ESTATE



GWENAËLLE POUY
Chief Development Officer
& Head of Real Estate
EASYHOTEL



ANTONIN PRADE
Investment Director
M&G REAL ESTATE



ANDY PYLE
Global Head of Real Estate
KPMG

Speakers



SARA QUEEN
Head of Real Estate Equity
and Managing Director
METLIFE INVESTMENT
MANAGEMENT



CHRIS RAE
Partner
CMS



BIRGIT RAHN-WERNER MRICS
CEO | Board Member
INDEVISE GROUP AG



CLLR SHANTANU RAJAWAT
Leader of the Council
LONDON BOROUGH
OF HOUNSLOW



BJÖRN RUNDSTRÖM
Editor in Chief
FASTIGHETSNYTT



JACKIE SADEK
Independent Chair
INNOVATION CORRIDOR



NAOMI SAKAMOTO
Studio Director, Principal
GENSLER



ALIDA SALEH
Head of Sustainability MEA
JLL



ADOLFO RAMÍREZ-ESCUDERO
CEO & Divisional leader LATAM
CBRE



TIMOTHÉE RAULU
Global Co-Head Real Estate
AXA IM ALTS



CARLOTA REBELO
Senior foreign correspondent
MONOCLE



JACK RENTERIA
ULLI Denmark National
Chairman
ULLI



OVIDIU SANDOR
CEO
MULBERRY DEVELOPMENT



NAWALE SAOUD
Director, Project & Development
Services North & West Africa
JLL



ANTONI SASTRE CUADRI
Head of Transaction
& Valuation
ZURICH INSURANCE, PLC



SABINE SCHAFFER
Co-Founder & CEO Europe
PRO-INVEST GROUP



JAMES RIDING
Chief reporter
INSIDE HOUSING



PAT RITCHIE, CBE
Chair of GPA and Board
member of Homes England
UK GOVERNMENT



TOM ROBERTS
Head of Strategic Investment
LEGAL & GENERAL



LIAM ROBINSON
Leader
LIVERPOOL CITY
COUNCIL



VALERIE SCHUERMANS
Vice President
Development
RADISSON HOTEL GROUP



DENNIS SELINAS
CEO
GLOBALWORTH



KAMILLA SEVEL
Editor in Chief
ESTATE MEDIA DENMARK



JESSE SHAPINS
Co-Head Neighborhood
Investments
URBAN PARTNERS



WILL ROBSON
Global Head of Real Assets
Solutions Research
MSCI



CAROLINA ROCA CASTILLO
President
ASPRIMA



FRANCISCO ROCHA ANTUNES
Executive President
MOME



PATRICIA RODRIGUES
Director
CONTROL RISKS



VALENTINA SHEGOYAN
Founding Partner
OPREIM



HONORÉ ACHILLE SIMO
Executive Director,
Value and Risk Advisory
JLL



KIRSI SIMOLA-LAAKSONEN
SVP Sustainability
and Environment
KONE CORPORATION



MARC SIMON
VP Regional Corporate
Real Estate Services
CAPGEMINI TECHNOLOGY
SERVICES



PAULO HENRIQUE RODRIGUES
Director - Founding Partner
STEMMER RODRIGUES
ARQUITETURA



JOANNE RONEY CBE
Chief Executive
BIRMINGHAM CITY
COUNCIL



MARIKA ROSA
Board Member
EKODOMA



PHILIPPE ROSSINI
Deputy Portfolio Manager
Hospitality
SWISS LIFE ASSET
MANAGERS FRANCE



RAJ SINGH
Managing Partner
JLL SPARK GLOBAL
VENTURES



JULIA SKEETE
Senior Associate Principal
SKIDMORE, OWINGS
& MERRILL (SOM)



ANNE SKOVBRØ
CEO
COPENHAGEN CITY
& PORT



SARAH SKUSE
Partner, Head of
Healthcare Real Estate
BEVAN BRITTAN LLP



STEVE ROTHERAM
Mayor
LIVERPOOL CITY REGION
COMBINED AUTHORITY



SAMANTHA ROWAN
Editor
PEI GROUP - PERE CREDIT



ANDREA RUCKSTUHL
Group Executive
International
LENDLEASE



MADS RUDE
Senior Managing Director
PATRIZIA GLOBAL
PARTNERS A/S



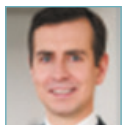
NEIL ANDREW SLATER
CEO
REDEVCO BV



ADAIR SMITH
Lead, Urban Transformation
WORLD ECONOMIC FORUM



FEDERICO SOFFIETTI
Managing Director Acquisitions
HINES ITALY RE SRL



PIOTR STANISZEWSKI
Partner
DENTONS EUROPE DĄBROWSKI
I WSPÓLNICY SP.K.

Speakers



VICTORIA STANLEY
Senior Investment Director,
Real Assets
AUSTRALIAN SUPER



INGRID STEMMER
Director - Founding Partner
STEMMER RODRIGUES
ARQUITETURA



Dr. THOMAS STEINMÜLLER
Representative
AFILOG INTERNATIONAL
C/O CAPTEN AG



KATIE STEWART
Executive Director, Environment
CITY OF LONDON
CORPORATION



TOM VENABLES
Director
PRIOR + PARTNERS



ULRICH VON CREYTZ
CIO Real Estate Europe
DWS



NICK WALKLEY
UK President
AVISON YOUNG



MAX WALMSLEY
Senior Portfolio Manager
LASALLE INVESTMENT
MANAGEMENT



VICTOR STOLTENBURG
Global Head of Investments
DEKA IMMOBILIEN
INVESTMENT GMBH



JUSTIN SULLIVAN
RICS President
RICS



NOAH TAIWO
Ambassador
REGENERATION BRAINERY



MARIE-CÉCILE TARDIEU
COO
BUSINESS FRANCE



JOHN WALSH
Chief Executive
BELFAST CITY COUNCIL



ANETA WARDZIŃSKA-SICZEK
Deputy Director at Architecture
and Spatial Planning
Department in Warsaw
CITY OF WARSAW



KELLY-ANNE WATSON
Managing Director
THE CLASS FOUNDATION



GAVIN WHITE
Executive Member for
Housing & Development
MANCHESTER CITY COUNCIL



NEIL TAYLOR
Senior Vice President
Data Strategy
MASTERCARD



REBECCA TAYLOR
Managing Director
LONG HARBOUR



KARIN TEICHMANN
Member of the Board
EUREF AG



RICHARD H. THOMPSON
Global Leader, Supply Chain
& Logistics Solutions
JLL



DAMIAN WILD
Managing Director
ING



SARA WILLARD
Founding Partner-Acquisitions
GREEN DEVELOPMENT FUND



MELANIE WILLIAMS
Global Head of Real Estate
DWF



COLIN WILSON
Chief Executive, EMEA
CUSHMAN & WAKEFIELD



EIME TOBARI
Global Director,
Social Impact
AVISON YOUNG



ANNACHIARA TORCIANO
Head of ESG and
Communications
SLÄTTÖ



MARIYA TSVETKOVA
Business Development
URBAN PARTNERS



LUCINDA TURNER
Asst Director Planning and
Regeneration
GREATER LONDON
AUTHORITY



GUS WISEMAN
Global Head of
Investor Relations
DEPARTMENT FOR BUSINESS
AND TRADE,
UK GOVERNMENT



CHRIS WISHART
Head of Care Home Investment
OCTOPUS REAL ESTATE



IAN WORBOYS
CEO and Co-Founder
EGLS



SIMON WYATT
Partner
CUNDALL



JACE TYRRELL
Chief Executive
OPPORTUNITY LONDON



ROB VALENTINE
Regional Director
BRUNTWOOD



JAN VALESKOG
Vice Mayor
CITY OF STOCKHOLM



**ANDRIES VAN DER
WALT**
Director, Real Estate
VERCO



HANNAH YULO-LUCCINI
Chief Executive Officer
HOTEL101 GLOBAL



LISETTE VAN DOORN
Europe CEO
ULI



SOPHIE VAN OOSTEROM
global head of real estate
CPP INVESTMENTS



STEPHAN VAN VLIET
Group Chief Investment
Officer
ZURICH INSURANCE



BARRY VARCOE
Director, Real Estate &
Portfolio Renewal
OPEN SOCIETY FOUNDATIONS

13.00 - 22.00
Grand Auditorium

HOUSING MATTERS!

a mipim event

GOLD SPONSORS



Creating a new deal

The Housing Matters! conference will kick off on Monday afternoon, exploring the mismatch between housing supply and demand.

Housing Matters! brings together investors, developers, local authorities, associations and urban experts to explore the latest trends in supply and demand, collaborative solutions for affordable housing, new housing models that match the products to the current needs and share visions of innovative housing of tomorrow.

- 13.00 Welcome coffee
- 14.00 - 14.10 Introduction
- 14.10 - 15.10 The Trend
- Supply Does Not Match Demand
- 15.10 - 16.00 Collaborative Solutions
for Affordable Housing
- 16.00 - 16.30 Coffee Break
- 16.15 - 17.30 Housing Reboot Workshop
(Salon Croisette)
- 16.30 - 17.30 The Goal - Adapting housing
products to the needs
- 17.30 - 17.55 Paths for Tomorrow
- 17.55 - 18.00 Closing Remarks
- 18.00 Networking Cocktail

Open to all

16.30 - 22.00
Hotel Martinez

RE INVEST SUMMIT

a mipim event

The RE-Invest Opening and evening dinner
By invitation only

PLATINUM SPONSOR



GOLD SPONSORS



DINNER SPONSOR



RE-Invest has been providing for over a decade now at MIPIM an exclusive opportunity for sovereign wealth, pension and insurance funds and other capital owners to debate investment strategies for real estate in developed and emerging markets. Before the dinner, guests will answer the intriguing questions "What is keeping you awake at night?" and "What are you most excited about?"

By invitation only

08.00 - 14.00
Hotel Martinez

RE INVEST SUMMIT
by mipim
By invitation only


PLATINUM SPONSOR
Investment Managers

GOLD SPONSORS
Aberdeen
CMS
PATRIZIA
REDEVCO

LUNCH SPONSOR
Schroders
capital

MIPIM OPENING SPONSOR
NEWMARK

15.00 - 16.00
Grand Auditorium
MIPIM Opening Keynote
Dr. Mario Draghi
Former President of the European Central Bank and Italian Prime Minister



16.20 - 18.00
Majestic Hotel - Salon Diane

POLITICAL LEADERS SUMMIT
by mipim
By invitation only

16.15 - 17.15
Grand Auditorium
ESG Awards

Organised by
EUBIN

19.00 - 22.00
Croisette & Riviera 9
Opening Night

Open to all registered attendees and included in your MIPIM pass

| Leaders' perspective stage | Asset Class stage | Road to Zero stage | Make it happen stage | Main Room Gare Maritime | Harbour Room Gare Maritime | Geo Focus stage |
|--|--|---|--|---|--|---|
| Palais 5 | Palais 3 | Palais 3 | Palais 3 - Audi A | Gare Maritime | Gare Maritime | Palais 3 |
| | <p>11.00 - 12.30 The Coliving Era - Understanding Trends in Shared Living, Market Demand, Innovations, and Exclusive Report Release</p> <p>Organised by Co-Liv</p> | | | | <p>11.00 - 12.30 Mastering Net Zero: Advancing the Impact of the UK Net Zero Carbon Buildings Standard Through Collaborative Round Tables</p> <p>13.00 - 14.00 Oslo Investor Summit - Safe Haven or Banana Republic?</p> <p>Organised by Haavind Malling NORSK ETENDOM</p> | <p>13.00 - 14.00 Oslo Investor Summit - Safe Haven or Banana Republic?</p> <p>Organised by Haavind Malling NORSK ETENDOM</p> |
| <p>14.00 - 15.00 Emerging Trends in Real Estate® in 2025 and Beyond</p> <p>Organised by IFRE Global Capital Institute</p> | <p>14.00 - 15.00 Future-Proofing Data Centre Investments - Strategies for Viability, Flexibility, and Scalability</p> <p>Sponsored by Knights Frank</p> | <p>14.00 - 15.00 Global Stocktake: Where are we on the Road to Zero?</p> <p>Sponsored by Heidelberg Materials RICS</p> | <p>14.00 - 15.00 Real Estate & Foreign Direct Investment: A Two-Way Opportunity</p> <p>Organised by WABA International Association of Business Executives</p> | | <p>14.00 - 15.00 Projet Immobilier et impact RSE : comment en faire un couple gagnant ?</p> <p>Organised by R3</p> | <p>14.30 - 15.30 Romania: The Emerging Investment Hub of Central and Eastern Europe</p> <p>Organised by Investment Hub</p> |
| <p>16.00 - 17.00 The global investors' vision</p> | <p>16.00 - 17.00 Life Sciences - Revitalising Spaces and Advancing Sciences</p> | <p>16.00 - 17.00 Plan your transition to Zero Carbon Cities' decarbonisation roadmaps as guidance</p> | <p>16.00 - 17.00 The battle for talent - attracting and retaining talent</p> <p>Sponsored by RICS</p> | | | <p>16.00 - 17.00 African Real Estate - Navigating Sustainability and Urbanisation</p> |
| <p>17.30 - 19.00 Conférence de presse France</p> | | | <p>17.30 - 18.00 En finir avec les bureaux d'hier</p> <p>Organised by WO2</p> | <p>17.00 - 19.00 JLL Innovation Party</p> <p>Organised by JLL/Spark</p> <p>By registration only</p> | | |

| UK Hub Verrière Grand Audi | London stand | Salon Croisette | Verrière Californie | Audi K | HTL Connection |
|--|---|--|--|---|---|
| Palais 1 | C14 | Palais 3 | Palais 5 | Palais 4 | C21 - Plage J. Macé |
| | <p>10.00 - 10.45 London and leisure: all fun and games</p> <p>Sponsored by ESTATES GAZETTE</p> <p>10.45 - 10.55 Keynote</p> <p>11.00 - 11.45 Planning Change, Driving Growth</p> <p>12.00 - 12.45 Affordable Homes</p> | | | <p>11.30 - 12.30 Poland's Logistics & Industrial Safe Bet: What is capturing investors' attention?</p> <p>Hosted by AXIMMO DENTONS HILLWOOD</p> | <p>9.00 - 10.30 HTL Connection ribbon cutting ceremony & Networking Breakfast</p> <p>Hosted by HOSPITALITY MKG</p> |
| <p>14.00 - 14.15 The UK Hub Stage official launch and welcome speeches</p> <p>14.15 - 15.00 Investment strategies for clean buildings: Determining the right pathway forward</p> | <p>14.00 - 14.45 5 years on: Workplace Trends</p> <p>14.45 - 14.55 Bringing the London Model to Life</p> | <p>14.00 - 15.00 How the Saudi Giga Projects are contributing to the development of the Kingdom's economy and the realisation of Vision 2030.</p> <p>Organised by Investment Hub INVEST SAUDI</p> | <p>14.00 - 15.00 Reimagining Cities: Disrupting the Urban Doom Loop</p> <p>Organised by CUSHMAN & WAKEFIELD</p> | <p>14.00 - 15.00 New Tashkent : The Future of Uzbekistan's Capital City</p> <p>Organised by GLOBAL TASHKENT XW</p> | <p>14.30 - 15.30 Hybrid Hospitality: Multi-Destination Assets and Evolving Institutional Appetite</p> |
| <p>16.15 - 17.00 Faster, bigger, better - How can the North become the UK's development driver?</p> <p>Organised by Place</p> | <p>16.00 - 16.45 Stronger Together: Cross-borough working in London</p> | <p>16.30 - 18.00 Table-ronde « Revitalisation du patrimoine bâti »</p> <p>Organised by Horizon Lérman</p> <p>Closed door event</p> | <p>16.30 - 17.30 From Vision to Value: Generating Alpha and Driving Total Returns Leveraging Digital</p> <p>Organised by McKinsey & Company</p> | <p>16.00 - 17.00 Tech vs. Real Estate Giants: Collaboration or Competition?</p> | <p>16.00 - 17.00 Invest In ... Blackpool, Calais, Porto, Roma, Warsaw</p> |
| <p>17.15 - 18.00 From trains to cranes: a residential development boom in the UK's best connected region</p> <p>Organised by MELANDS GROWTH COMPANY</p> | <p>From 17.00 London Stand Opening Reception</p> <p>In partnership with OPPORTUNITY LONDON</p> <p>Sponsored by leadase</p> | | <p>17.30 - 18.30 7 Years of dreaming big: the story of the New Capital</p> <p>Organised by ACUJ ASSOCIATION OF COUNTRYSIDE DEVELOPERS</p> | <p>17.30 - 19.00 Brazil Networking Cocktail</p> <p>Organised by BRASIL NETWORKING</p> | |

| Leaders' perspective stage | Asset Class stage | Road to Zero stage | Make it happen stage | Main Room Gare Maritime | Geo Focus stage |
|--|---|--|---|--|--|
| Palais 5 | Palais 3 | Palais 3 | Palais 3 - Audi A | Gare Maritime | Palais 3 |
| <p>10.00 - 11.00 Doing business with purpose</p> <p>Organised by Dechert</p> <p>11.30 - 12.30 Trends in U.S. Real Estate and Capital Markets</p> <p>Organised by CHIOMENTI</p> <p>12.45 - 13.45 Italy and Beyond</p> <p>Organised by JLL</p> <p>14.00 - 15.00 Global Manufacturing and Supply Chain: How geopolitics and trade policies impact Industrial real estate</p> <p>Organised by JLL</p> <p>15.30 - 16.30 What does it take to become an effective urban change maker?</p> <p>Organised by ITA</p> <p>16.45 - 18.15 Property & infrastructures: leveraging Italy's unique natural beauty and strategic location</p> <p>Organised by ITA</p> <p>18.30 - 19.30 Grand Prix AFEX 2025 Awards</p> <p>Organised by AFEX</p> | <p>10.00 - 12.30 The Residential Workshop - Mapping Capital Flows, Markets, and Shifts in Living Concepts</p> <p>Organised by measurabl</p> <p>12.00 - 12.30 Residential Workshop Networking Cocktail</p> <p>Sponsored by RICS</p> <p>14.00 - 15.00 The Logistics Forum: Part I - The global big picture, demand patterns, what's hot and investment trends</p> <p>Sponsored by ctp</p> <p>15.00 - 16.00 The Logistics Forum: Part II - 'Not in my back yard!' Addressing land use shortages to serve houses and industry</p> <p>Sponsored by ctp</p> <p>16.00 - 17.00 The Logistics Forum: Part III - Tackling ESG sustainability initiatives and impacts on the market and occupiers</p> <p>Sponsored by ctp</p> <p>17.00 - 17.30 The Logistics Forum Networking Cocktail</p> <p>Organised by ITA</p> | <p>10.00 - 11.00 Surviving EU Taxonomy: Real Estate Compliance Made Simple</p> <p>Sponsored by CUNJALL</p> <p>11.30 - 12.30 Transition KPIs Unpacked: Real Estate Metrics that Matter</p> <p>Sponsored by measurabl</p> <p>14.00 - 15.00 From Brown to Green: Decarbonizing Real Estate for Sustainable Returns</p> <p>Organised by measurabl</p> <p>15.30 - 16.30 Smarter Buildings for a Sustainable Future with Smart Readiness Indicator</p> <p>Organised by measurabl</p> | <p>10.00 - 11.00 AI Lecture I: How some organizations get an unfair advantage in RE investment decisions with AI - don't get left behind!</p> <p>Sponsored by CREW</p> <p>11.30 - 12.30 AI Lecture II: AI - A 101 for senior Real Estate leaders</p> <p>Sponsored by CREW</p> <p>14.00 - 15.00 AI Lecture III: How can data help solve real estate problems</p> <p>Sponsored by ECG</p> <p>15.30 - 16.30 AI Lecture IV: Ready your business for a digital world</p> <p>Organised by measurabl</p> | <p>11.00 - 15.00 FORUM DES ELUS</p> <p>11.00 - 12.45 Interactive speeches and debates</p> <p>12.45 - 13.15 Cocktail reception</p> <p>13.15 - 14.15 Seated lunch</p> <p>14.15 - 14.45 Press coffee break</p> <p>In partnership with TAMF, FRANCOIS LEGAL BUSINESS, OPINION, VILLES</p> <p>By invitation only</p> <p>16.00 - 18.00 Equality of opportunities in Real Estate</p> | <p>9.30 - 10.30 Germany: German Real Estate Market & Capital: setting for rebound ?</p> <p>Sponsored by ctp</p> <p>11.00 - 12.00 Invest in Japan</p> <p>12.30 - 13.30 Spanish Conference: Discover Spain's affordable housing market as a gateway to profitable and sustainable investments</p> <p>Organised by Spanish</p> <p>14.00 - 15.00 Nordic Edge - Global Opportunities in the Nordic Market</p> <p>Organised by Spanish</p> <p>15.30 - 16.30 CEE Real Estate - Global Appeal, Market Dynamics, and Investment Trends</p> <p>Sponsored by ctp</p> <p>18.00 - 18.45 Why is Portugal a leading opportunity for Real Estate Investors?</p> <p>18.45 - 19.30 Networking Cocktail</p> <p>Organised by IBERIANPROPERTY</p> |

11.00 - 15.00
Main Room - Gare Maritime

FORUM DES ELUS

In partnership with **TAMF**, **FRANCOIS LEGAL BUSINESS**, **OPINION**, **VILLES**

By invitation only

16.00 - 18.00
Main Room - Gare Maritime
Equality of opportunities in Real Estate

| UK Hub Verrière Grand Audi | London stand | Salon Croisette | Verrière Californie | Audi K | HTL Connection |
|---|---|---|--|--|---|
| Palais 1 | C14 | Palais 3 | Palais 5 | Palais 4 | C21 - Plage J. Macé |
| <p>8.30 - 10.00 UK Investor Breakfast</p> <p>Organised by BPF</p> <p>10.00 - 10.30 Capital Investment and UK Development - A Re-Emerging Opportunity</p> <p>Hosted by CREAT</p> <p>By invitation only</p> <p>10.45 - 11.30 Attracting investment: Sound future strategies for UK Real Estate</p> <p>11.45 - 12.30 Old Trafford Regeneration: A catalyst for UK growth</p> <p>Organised by OLD TRAFFORD</p> <p>14.00 - 14.45 Building the innovation economy: Working together to shape up a new breed of investment assets</p> <p>15.00 - 15.45 Ox(vs)Cam Arc: the relationship between the UK's top life sciences markets</p> <p>Organised by ESTATES GAZETTE</p> <p>16.00 - 16.45 Tomorrow's housing market: Debating investment, Government's role and product types</p> <p>Sponsored by HABIKO</p> <p>17.00 - 19.00 Get Britain Building - Constructing our Future</p> <p>Hosted by CONSERVATIVE CONSERVATIVE SCIENCE</p> | <p>10.00 - 10.45 Green returns: the state of sustainability ROI in 2025</p> <p>Sponsored by Property Week</p> <p>10.45 - 10.50 SwiMIPIM</p> <p>11.00 - 11.45 Delivering Property for Science and Innovation</p> <p>12.00 - 12.20 Keynote - What is the Money Doing? Taxation and the Property Industry</p> <p>13.00 - 13.20 Retrofit vs. Demolition: Is London's planning fit for purpose post M&S?</p> <p>14.00 - 14.45 Navigating the Growth of Rental Living</p> <p>14.45 - 14.55 Bringing the London Model to Life</p> <p>15.00 - 15.45 Nighttime Economy and 24-hour Cities</p> <p>16.00 - 16.45 Sport and Placemaking</p> <p>17.00 - 19.00 Growing the UK architecture sector and the economy</p> <p>Hosted by BARRISOL</p> | <p>8.30 - 10.30 GOP Networking Breakfast</p> <p>Organised by GIANNI ORIGONI</p> <p>By invitation only</p> <p>11.00 - 12.00 C'est dans les vieux pots qu'on fait les meilleures soupes: nos actifs ont de la ressource!</p> <p>Organised by LINKCITY</p> <p>14.30 - 15.30 Recovery: not everywhere all at once</p> <p>Organised by MSCI</p> <p>16.00 - 17.00 Life Sciences: the roadmap for the reindustrialisation</p> <p>Organised by Barcelona Catalonia</p> <p>17.30 - 19.00 Brazilian Architecture and Urban Planning: Solutions for a Changing World</p> <p>Organised by BUECKER CONSULT</p> | <p>9.30 - 10.30 Madrid in transformation, an opportunity for the future</p> <p>Organised by MADRID</p> <p>11.00 - 12.00 Retrofitting for sustainable Real Estate: synchronizing decarbonization and climate adaptation plans to maximize performance</p> <p>Organised by deepki</p> <p>14.00 - 15.00 Montpellier, l'avenir s'invente ici</p> <p>Organised by inSilesia, Metropolis GZM, KISSE</p> <p>15.30 - 16.15 Leveraging UK Innovation: Major investment opportunities in the new London-Birmingham corridor</p> <p>Organised by hub.brussels, ecobuild</p> <p>16.45 - 17.45 Between market correction and economic challenges: Where and how should you currently invest in Germany?</p> <p>Organised by ITA</p> <p>18.15 - 19.30 Italian Networking Cocktail by ITA (Italian Trade Agency)</p> <p>Organised by ITA</p> | <p>9.45 - 10.40 Metropolises in Motion: Liège and Lille, Attractiveness at the Core</p> <p>Organised by MEL</p> <p>10.45 - 11.40 Transforming yesterday's spaces into tomorrow's cityscapes. A dialogue between Charleroi and Nantes Métropole.</p> <p>Organised by gretec, Nantes Métropole</p> <p>11.45 - 12.30 Fundraising Pitch session by Proptech Lab</p> <p>Organised by proptechlab</p> <p>13.45 - 14.45 Poland's Silesia Region & Katowice Megacity: A New Powerhouse for Global Investments</p> <p>Hosted by inSilesia, Metropolis GZM, KISSE</p> <p>15.00 - 15.55 Beyond Compliance: Brussels Turning CSRD Challenges into Opportunities</p> <p>Organised by hub.brussels, ecobuild</p> | <p>10.00 - 11.00 Leases and contractualization: Understanding the specifics of hotel asset leases</p> <p>Sponsored by SwissLife</p> <p>11.30 - 12.30 Invest In ... Blackpool, Calais, Ottawa, Nice, Porto, Roma, Warsaw</p> <p>14.00 - 15.00 Shifting sands: the impact of falling interest rates on hotel investments and asset values</p> <p>Sponsored by IOI GLOBAL</p> <p>15.30 - 16.30 Leisure products: Resorts and campsites</p> <p>Sponsored by IOI GLOBAL</p> |

9.30 - 12.30
Audi I
Columbia AI Day

By invitation only

12.30 - 14.00
C21 - Plage J. Macé
HTL Connection Lunch

Sponsored by
ECE

By invitation only

From 18.30
Grand Auditorium Stage
mipim AWARDS

Open to all

| Leaders' perspective stage | Asset Class stage | Road to Zero stage | Make it happen stage | Main Room Gare Maritime | Harbour Room Gare Maritime | Geo Focus stage |
|---|--|--|--|--|---|---|
| Palais 5 | Palais 3 | Palais 3 | Palais 3 - Audi A | Gare Maritime | Gare Maritime | Palais 3 |
| | | | | 8.30 - 10.30 ADI occupiers breakfast Organised by By invitation only | 9.45 - 10.45 Who Pays for Long-Term Impact? Three-Sided Hot Seats Debate for Stagnant Development Sites Organised by | 9.30 - 10.30 Middle East Mega Projects: Innovations, Investments, and Pathways to Sustainability Organised by |
| 10.00 - 11.00 Long-term demographic change's impact on creating liveable and sustainable cities: differences in Europe vs international | 10.00 - 12.30 The Offices Workshop - Global demand, revitalisation tactics, attracting investment, role of tech and future proofing ESG metrics Sponsored by | 10.00 - 11.00 Protecting your value: Assessing and Addressing Physical Climate Risk and Building Resilience Organised by | 10.00 - 11.00 The changing profession - preparing and retraining talent for future roles Organised by | 11.00 - 12.30 A-Delphi Study for PPP: Building Long-Term Commitment in Urban Regeneration Organised by | 11.00 - 12.30 Choose France What are the opportunities, challenges, and strategies for attracting more funds | 11.00 - 13.00 11.00 - 13.00 Choose France What are the opportunities, challenges, and strategies for attracting more funds |
| 11.30 - 12.30 The big picture for real estate today: Macroeconomics, attracting investment and insurance of real estate - The latest trends and best practices Sponsored by P I M C O | | 11.30 - 12.30 The secret sauce to success on the road to zero Organised by | 11.30 - 12.30 The Road to Saudi Arabia's Vision 2030 - A perspective from Riyadh. The City of Earth Organised by | 13.00 - 14.00 Asian Luncheon Cocktail By invitation only | | |
| 14.00 - 15.00 mipim CHALLENGERS | 14.00 - 16.00 European Healthcare Real Estate: Market Insights and New Opportunities Sponsored by | 15.00 - 16.00 La simplification administrative suffira-t-elle à relancer le logement ? Organised by | 14.00 - 15.00 CoreNet Global's visionary bold statements predict an industry upheaval by 2030! Organised by | | 14.00 - 15.30 Collaborative Partnerships for Social Value - Round Tables to Drive Impact on the Ground | 14.00 - 15.00 Cities of the Future - How Gulf Economies are Reshaping Tomorrow's Cities |
| | 16.00 - 16.30 Healthcare Networking Cocktail Sponsored by | | | | 16.00 - 17.00 Financing Neighbourhood Regeneration in Europe: Cities and Real Estate Path to Tackle the Housing Crisis Without Sacrificing Climate Goals Organised by | 15.00 - 16.00 The evolving real estate sector in Saudi Arabia Organised by |

| UK Hub Verrière Grand Audi | London stand | Salon Croisette | Verrière Californie | Audi K | HTL Connection |
|--|--|---|--|--|--|
| Palais 1 | C14 | Palais 3 | Palais 5 | Palais 4 | C21 - Plage J. Macé |
| 8.30 - 9.00 Connected tech & Digital Construction layers - how to build a best in class tech stack from site to office, connecting the data Organised by | | 9.15 - 10.30 Conférence le Forum Suisse - Intervention du cabinet d'architecture international WilkinsonEyre Organised by | 8.30 - 10.00 Nordic Breakfast Organised by | | 9.00 - 10.00 HTL Connection x Schindler Breakfast Organised by |
| 10.00 - 11.00 Urban reinvention to boost resilience: The crucial role of placemaking to attract investment in city centres and new towns | 10.00 - 10.45 Value of Good Design | | 10.00 - 10.45 Why and how should the Plan organising functions in Brussels be modified? Organised by | 10.00 - 10.45 Why and how should the Plan organising functions in Brussels be modified? Organised by | 10.00 - 11.00 Sustainable attractiveness: Redefining destinations by attracting and supporting high-impact projects |
| | 11.00 - 11.45 Tall Buildings | 11.00 - 12.00 Global Solutions: Urban Growth within Planetary Limits Organised by | 10.30 - 11.30 Madrid Region, the leading model for investment attraction Organised by | 10.45 - 12.15 Brussels in Transition: Building the City in a Changing Context Organised by | |
| 11.15 - 12.00 Investible North: where should investors put their money? Hosted by | 12.00 - 12.30 London Past and Future | | | | |
| 12.15 - 13.00 How PropTech can Attract and Unlock UK Real Estate's Investment Potential Organised by | | | | | 12.30 - 14.00 HTL Connection Lunch Sponsored by By invitation only |
| | 14.00 - 14.45 Creating New Destinations | | | 14.00 - 15.00 Il real estate costruisce l'asset class del futuro Organised by | |
| | 14.45 - 14.55 Bringing the London Model to Life | | 15.00 - 16.00 Challengers Networking Cocktail | | |
| | 15.00 - 15.45 Planning Healthy Cities | | | 15.30 - 16.30 LET'S BRAND THE FUTURE: Creating Luxury Experiences from Residential to Hospitality Organised by | |